

RESOLUTION NO. ~~03-103~~

RESOLUTION CREATING RURAL SPECIAL IMPROVEMENT MAINTENANCE
DISTRICT TO BE KNOWN AS R.S.I.D. #706M
THREE WOLF CREEK SUBDIVISION

WHEREAS, the Board of County Commissioners of Yellowstone County, Montana, met in regular session and executed a Resolution of Intent to Create a Rural Special Improvement Maintenance District #706M for Three Wolf Creek Subdivision, as described in Exhibit A and more particularly shown in Exhibit B (map) and,

WHEREAS, the Clerk and Recorder published the Notice of the passage of Resolution of Intent to Create the District in the Billings Gazette on August 1 and 8, 2003, and mailed a copy of the Notice to every person, firm or corporation owning property in the District; and,

WHEREAS, the Board of County Commissioners finds, determines and declares that:

1. That the public interest or convenience requires the creation of a Rural Special Improvement Maintenance District as hereinafter described;

2. That the costs of providing maintenance shall be borne by owners of the property included within the boundaries of the Rural Special Improvement Maintenance District with all existing and future lots being assessed an equal amount on a per lot basis;

3. That the purpose of forming the District is to provide the maintenance, preservation, and repair of the streets and control of noxious weeds located within the boundaries of this District;

4. That the Commissioners have been presented with a valid Petition to create the proposed District;

NOW, THEREFORE, BE IT RESOLVED by the Board of County Commissioners of Yellowstone County as follows:

1. The Commissioners have acquired jurisdiction to create a Rural Special Maintenance District No. 706M to provide for the annual maintenance, grading, operation and preservation of the streets and control of noxious weeds. The maintenance costs are more particularly described in Exhibit D. The estimated costs shown do not preclude other eligible street maintenance expenditures.

2. All of the costs of the District shall be assessed equally on a per lot basis for all existing and future lots. (See Exhibit C.) The boundaries of this District are shown on the map attached as Exhibit B and described in Exhibit A.

3. The number of the Rural Special Maintenance District thereof shall be No. 706M.

Page 2
Resolution Creating
R.S.I.D.# 706M

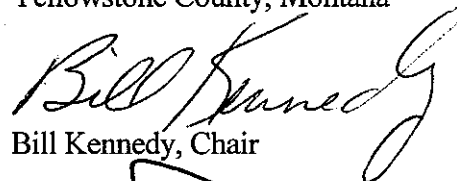
4. All lots accessing their property from the streets will benefit from proposed R.S.I.D. and shall be assessed for road maintenance. All lots will be assessed an equal amount based upon the total cost of the maintenance.

5. The Commissioners desire that an Ad Hoc Committee be appointed to make recommendations to the Commissioners with regard to the need for assessments to be made for the maintenance and the amount of the assessments, and how the assessments should be spent. The Commissioners ask that the Petitioners submit a list of some individuals who are willing to serve on the Ad Hoc Committee.

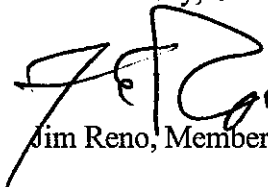
PASSED AND ADOPTED by the Board of County Commissioners of Yellowstone County, Montana, this 12th day of August, 2003.

Board of County Commissioners
Yellowstone County, Montana

(SEAL)



Bill Kennedy, Chair



Jim Reno, Member

ATTEST:



Tony Nave
Clerk and Recorder

ABSENT

John Ostlund, Member

EXHIBIT A

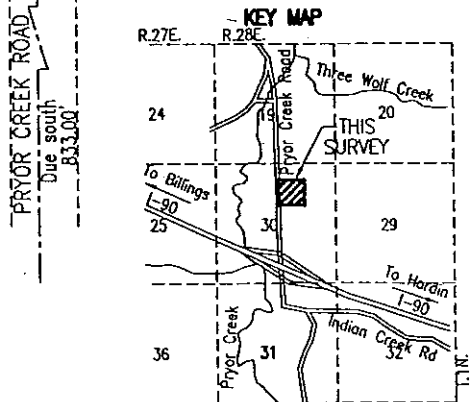
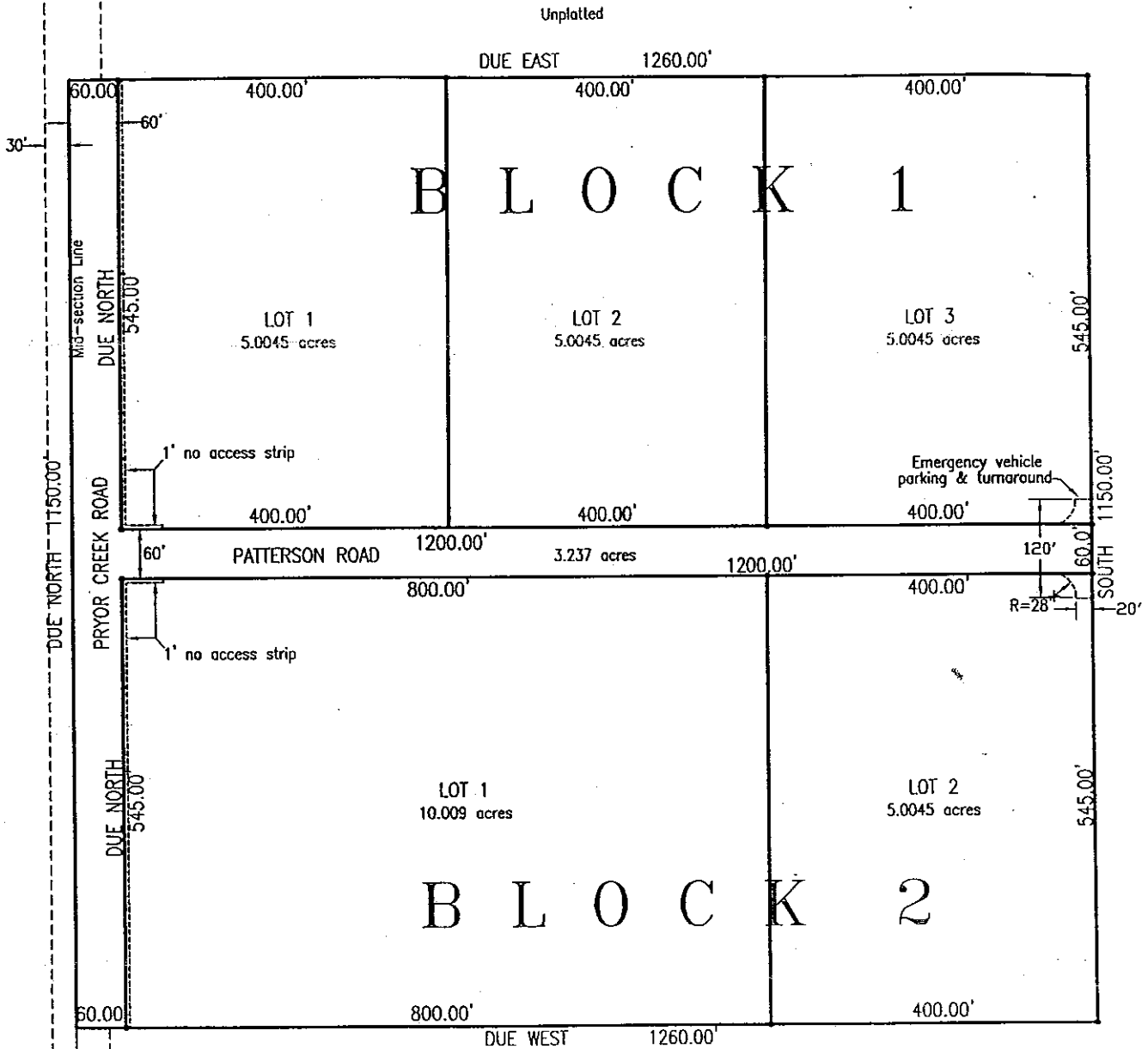
**PETITION FOR CREATION OF
RURAL SPECIAL IMPROVEMENT DISTRICT (RSID)**

**SECTION B
LEGAL DESCRIPTIONS**

Lots 1, 2, and 3, Block 1 and Lots 1 and 2, Block 2 Three Wolf Creek Subdivision

EXHIBIT B
APPLICATION FOR CREATION OF A
RURAL SPECIAL IMPROVEMENT DISTRICT (RSID)

SECTION A
MAPS OF RURAL SPECIAL IMPROVEMENT DISTRICT BOUNDARY



NOT TO SCALE

**PETITION FOR CREATION OF
RURAL SPECIAL IMPROVEMENT DISTRICT (RSID)**

**SECTION D
METHOD OF ASSESSMENT**

CHOOSE A METHOD OF ASSESSMENT:

- Square Footage:
- Equal Amount:
- Front Footage:
- Other (Describe):

**PETITION FOR CREATION OF
RURAL SPECIAL IMPROVEMENT DISTRICT (RSID)**

**SECTION C
ESTIMATED ANNUAL MAINTENANCE COST**

FALL MAINTENANCE:

ACTIVITY	ESTIMATED COST
Road Grading 1 X/fall	\$100.00
	\$

WINTER MAINTENANCE:

ACTIVITY	ESTIMATED COST
Snow plowing 2X/winter	\$200.00
	\$

SPRING MAINTENANCE:

ACTIVITY	ESTIMATED COST
Road Grading 1X/spring	\$100.00
	\$

SUMMER MAINTENANCE:

ACTIVITY	ESTIMATED COST
Weed Control 1X/summer	\$50.00
	\$

\$450.00/5 lots = \$90.00/lot/year

TOTAL ESTIMATED ANNUAL MAINTENANCE COST: \$450.00